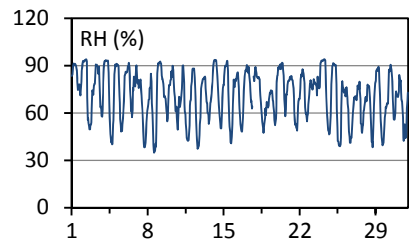
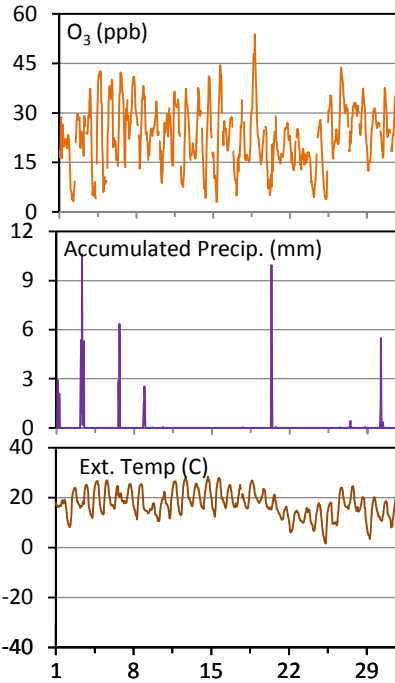
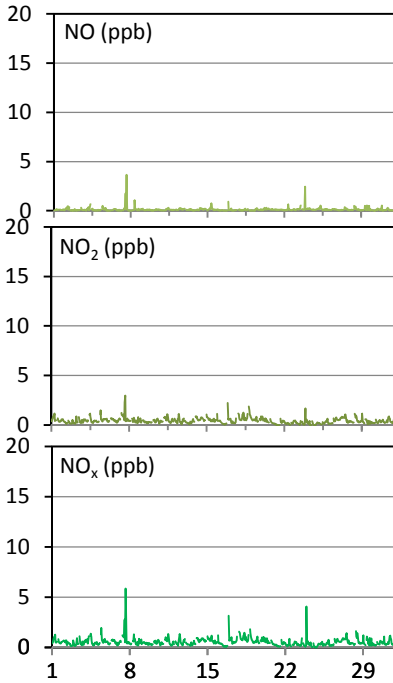


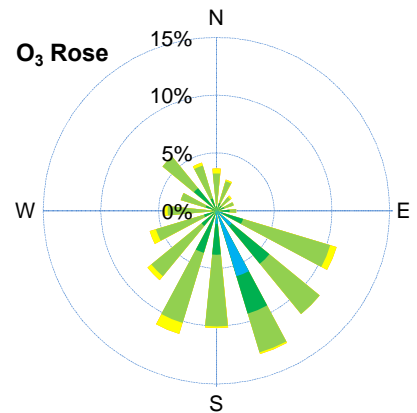
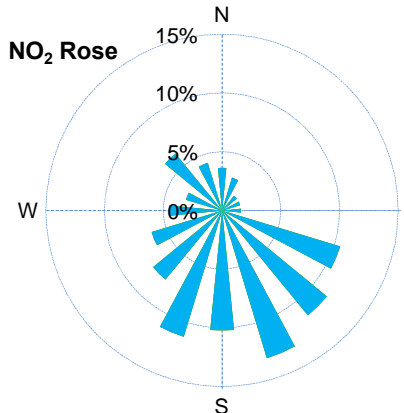
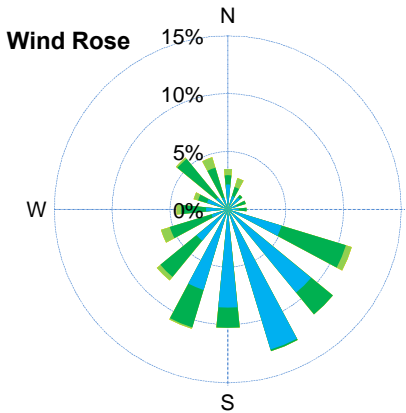
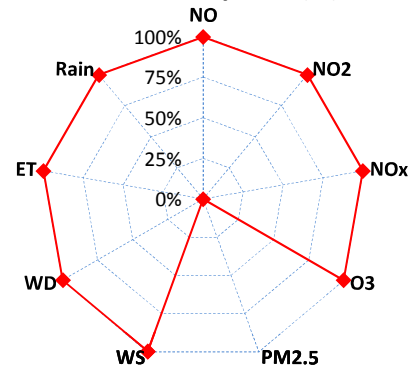
# WYAMZ Meadow Lake Station - August 2014 Summary Report

Pollutants		Month Records		24-Hour Records				1-Hour Records			
Name	Conc. Unit	Avg. Conc.	Uptime	Maximum		SAAQS Objective	Exceed Days	Maximum		SAAQS Objective	Exceed Hours
				Conc.	Time			Conc.	Time		
NO	ppb	0.1	99.7%	0.4	Aug-7	-	-	3.7	Aug-07 14:00	-	-
NO <sub>2</sub>	ppb	0.4	99.7%	0.8	Aug-7	-	-	3.0	Aug-07 15:00	212	0
NO <sub>x</sub>	ppb	0.6	99.7%	1.2	Aug-7	-	-	5.9	Aug-07 14:00	-	-
O <sub>3</sub>	ppb	23	99.7%	32	Aug-7	-	-	54	Aug-18 19:00	82	0

SAAQS: Saskatchewan Ambient Air Quality Standards



Instrument Uptime (%)



Parameters	Unit	Color Code for Wind Spd & Pollutant Conc. Class						
Wind Speed	m/s	0.3 ≤ WS < 1.4	1.4 ≤ WS < 3.1	3.1 ≤ WS < 7.8	7.8 ≤ WS < 10.8	10.8 ≤ WS < 13.6	WS ≥ 13.6	
NO <sub>2</sub>	ppb	0 ≤ C < 5	5 ≤ C < 15	15 ≤ C < 30	30 ≤ C < 100	100 ≤ C < 212	C ≥ 212	
O <sub>3</sub>	ppb	0 ≤ C < 10	10 ≤ C < 20	20 ≤ C < 40	40 ≤ C < 60	60 ≤ C < 82	C ≥ 82	

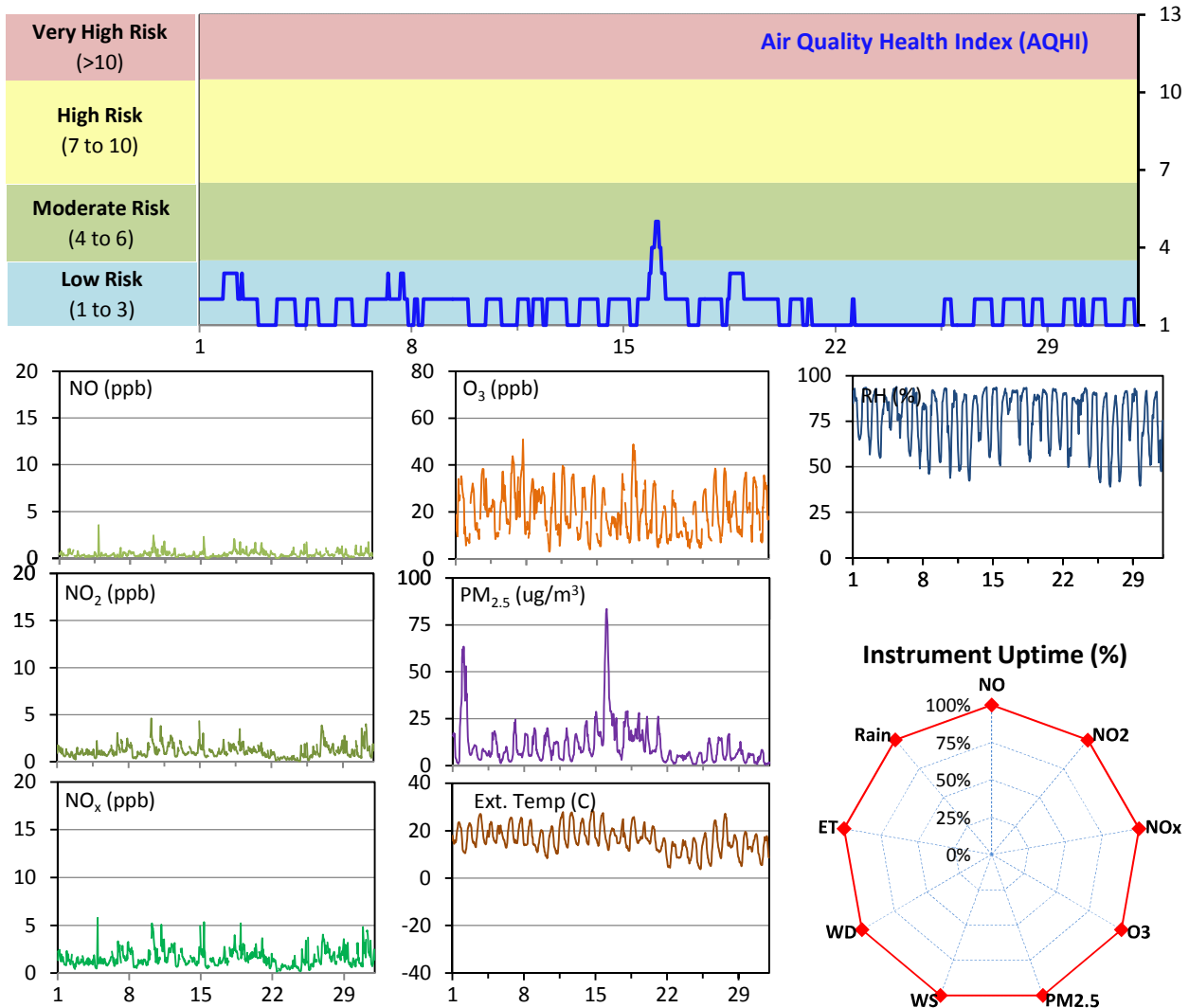
## Monthly Update

- \*All data has been slope, intercept, and baseline corrected. Data may change after validation process.
- \*All compliance parameters were within the Saskatchewan Ambient Air Quality Standards.
- \*All compliance parameters were greater than 90% operational, with the exception of the PM<sub>2.5</sub> analyzer.
- \*Operational issues include: The PM<sub>2.5</sub> analyzer has been malfunctioning since July 1. AMEC Technicians will repair the analyzer in September. There are 2 hours of data flagged as "power failure" on August 17 for all parameters.

# WYAMZ Unity Station - August 2014 Summary Report

Pollutants		Month Records		24-Hour Records				1-Hour Records			
Name	Conc. Unit	Avg. Conc.	Uptime	Maximum		SAAQS Objective	Exceed Days	Maximum		SAAQS Objective	Exceed Hours
				Conc.	Time			Conc.	Time		
NO	ppb	0.4	99.9%	0.8	Aug-18	-	-	3.6	Aug-04 21:00	-	-
NO <sub>2</sub>	ppb	1.1	99.9%	1.8	Aug-27	-	-	4.6	Aug-10 05:00	212	0
NO <sub>x</sub>	ppb	1.6	99.9%	2.5	Aug-10	-	-	5.8	Aug-04 21:00	-	-
O <sub>3</sub>	ppb	20	100.0%	28	Aug-7	-	-	51	Aug-07 16:00	82	0
PM <sub>2.5</sub>	ug/m3	11	100.0%	38	Aug-16	30	1	84	Aug-16 01:00	-	-

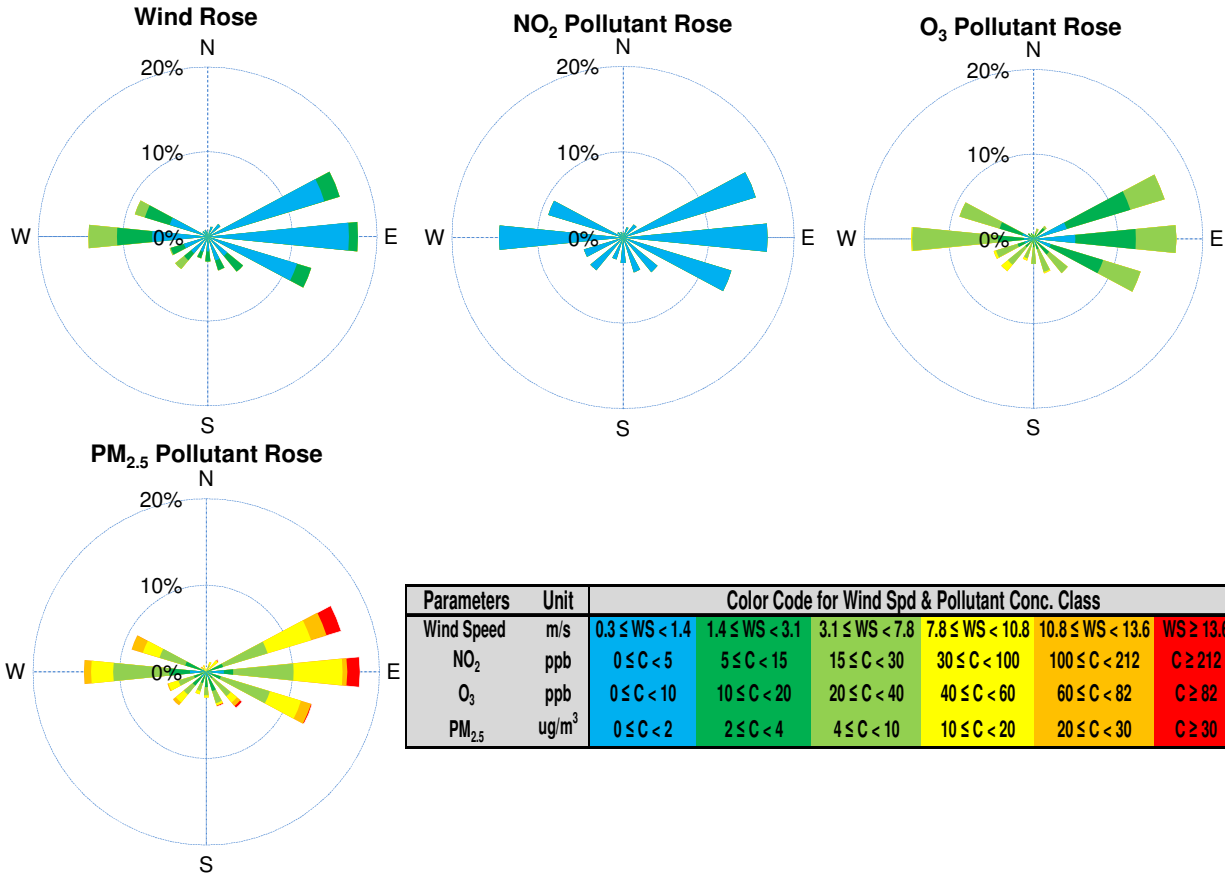
SAAQS: Saskatchewan Ambient Air Quality Standards



## Monthly Update

- \*All data has been slope, intercept, and baseline corrected. Data may change after validation process.
- \*All compliance parameters were within the Saskatchewan Ambient Air Quality Standards, with the exception of one 24-hour PM<sub>2.5</sub> exceedance events. Please see the exceedance summary table for details.
- \*All compliance parameters are above 90% operational.
- \*Operational issues: There is one hour of NO/NO<sub>2</sub>/NO<sub>x</sub> data flagged as "power failure" on August 8. All analyzers were affected by the power disruption, however NO/NO<sub>2</sub>/NO<sub>x</sub> was slower to recover.

# WYAMZ Unity Station - August 2014 Summary Report



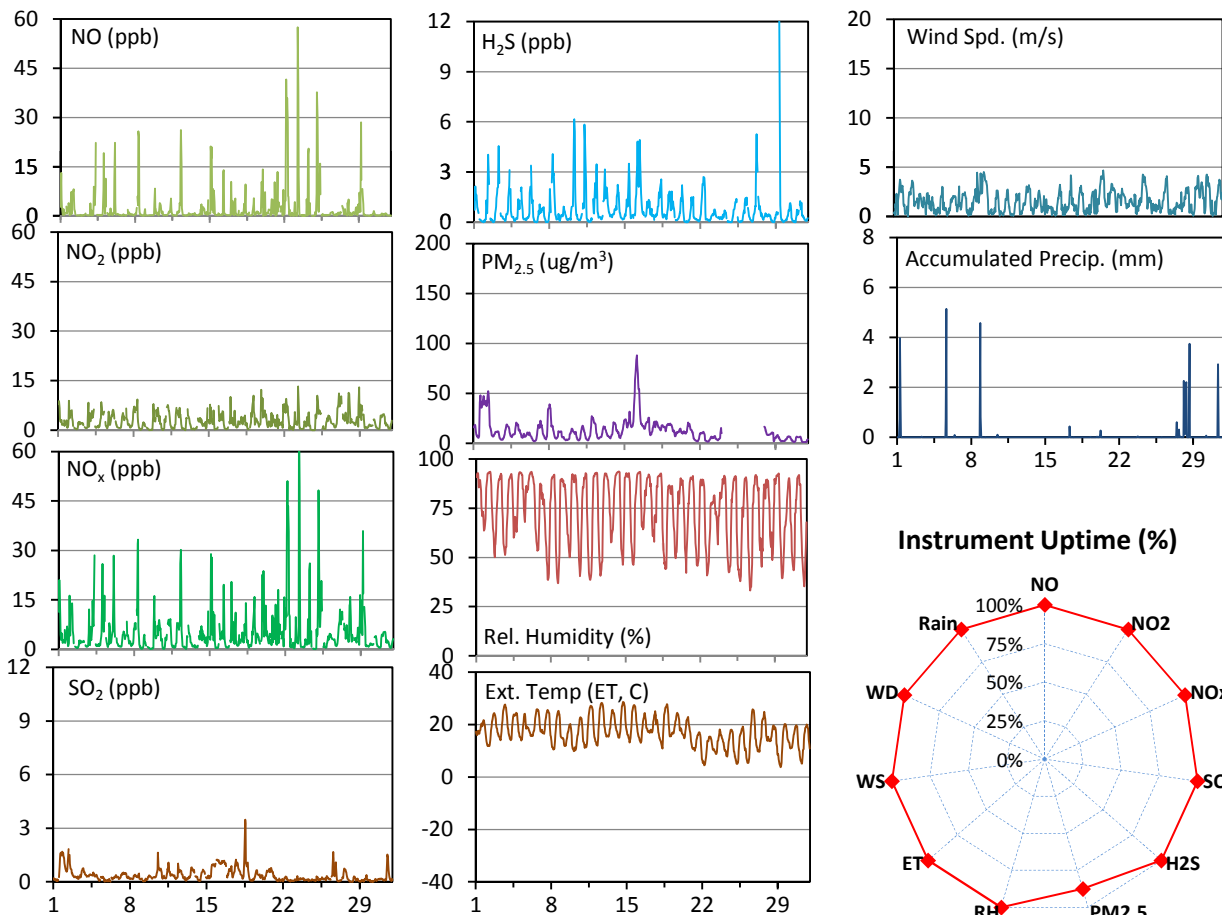
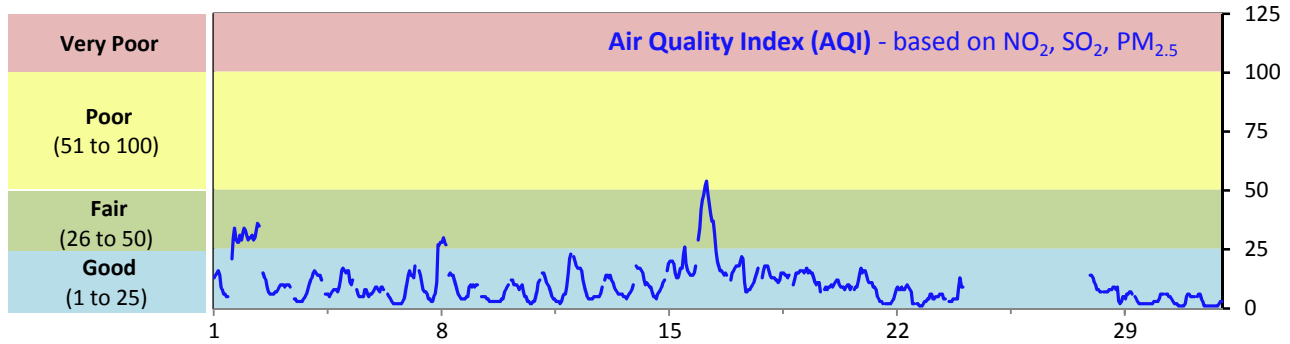
Parameters	Unit	Color Code for Wind Spd & Pollutant Conc. Class					
Wind Speed	m/s	$0.3 \leq WS < 1.4$	$1.4 \leq WS < 3.1$	$3.1 \leq WS < 7.8$	$7.8 \leq WS < 10.8$	$10.8 \leq WS < 13.6$	$WS \geq 13.6$
NO <sub>2</sub>	ppb	$0 \leq C < 5$	$5 \leq C < 15$	$15 \leq C < 30$	$30 \leq C < 100$	$100 \leq C < 212$	$C \geq 212$
O <sub>3</sub>	ppb	$0 \leq C < 10$	$10 \leq C < 20$	$20 \leq C < 40$	$40 \leq C < 60$	$60 \leq C < 82$	$C \geq 82$
PM <sub>2.5</sub>	ug/m <sup>3</sup>	$0 \leq C < 2$	$2 \leq C < 4$	$4 \leq C < 10$	$10 \leq C < 20$	$20 \leq C < 30$	$C \geq 30$

Exceedance Summary											
Pollutant	Conc. ppb	Exceedance Date mmm-dd	WS m/s	WD deg	AQHI -	Rain mm	NO ppb	NO <sub>2</sub> ppb	NO <sub>x</sub> ppb	O <sub>3</sub> ppb	PM <sub>2.5</sub> ug/m <sup>3</sup>
<b>24-hour Exceedance Information</b>			WS	WD	AQHI	Rain	NO	NO <sub>2</sub>	NO <sub>x</sub>	O <sub>3</sub>	PM <sub>2.5</sub>
PM <sub>2.5</sub>	38	Aug-16	1.1	82	3	0.0	0	1	1	14	38

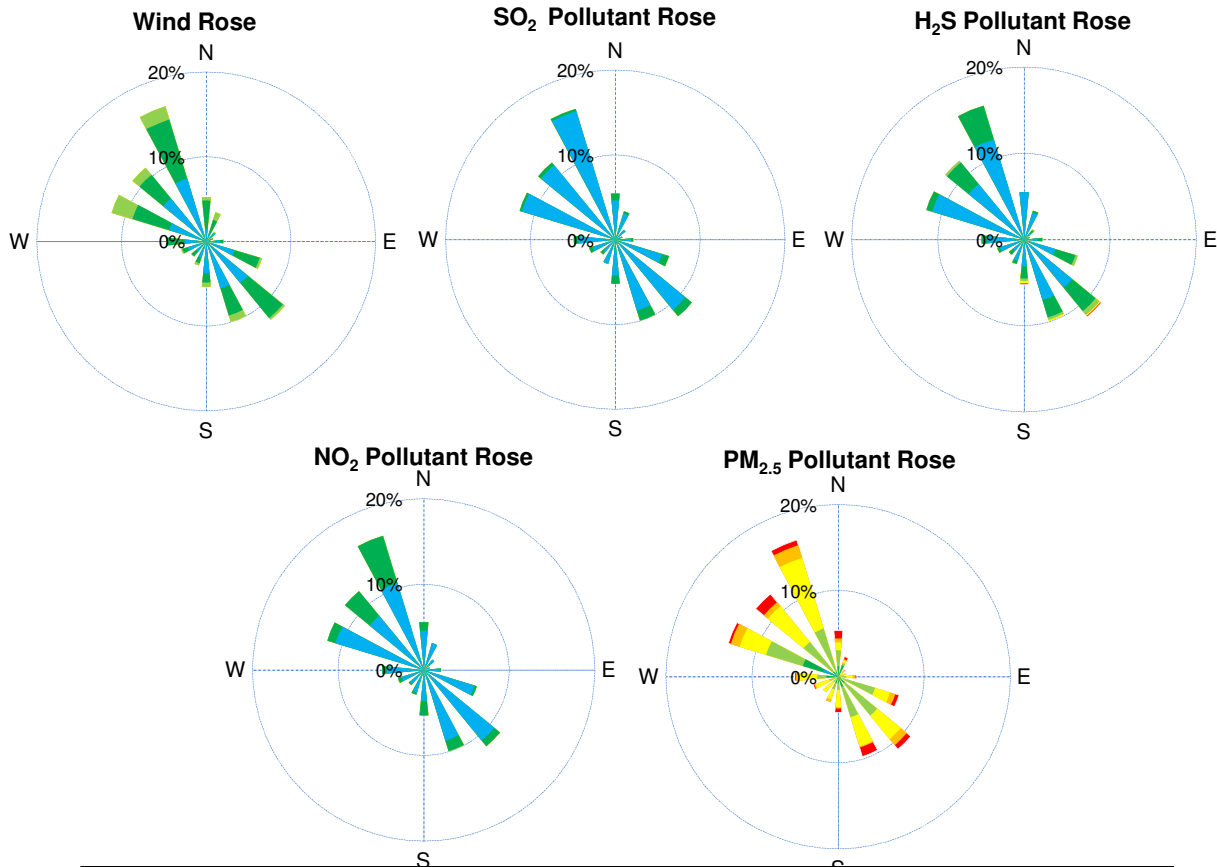
# WYAMZ Maidstone Station - August 2014 Summary Report

Pollutants		Month Records		24-Hour Records				1-Hour Records			
Name	Conc. Unit	Avg. Conc.	Uptime	Maximum		SAAQS Objective	Exceed Days	Maximum		SAAQS Objective	Exceed Hours
				Conc.	Time			Conc.	Time		
NO	ppb	2.2	100.0%	8.4	Aug-22	-	-	57.5	Aug-23 06:00	-	-
NO <sub>2</sub>	ppb	2.9	100.0%	6.3	Aug-27	-	-	13.3	Aug-23 06:00	212	0
NO <sub>x</sub>	ppb	5.1	100.0%	12.1	Aug-22	-	-	70.8	Aug-23 06:00	-	-
SO <sub>2</sub>	ppb	0.4	100.0%	1.0	Aug-16	57	0	3.5	Aug-18 12:00	172	0
H <sub>2</sub> S	ppb	0.8	100.0%	2	Aug-16	3.6	0	13.5	Aug-29 07:00	10.8	2
PM <sub>2.5</sub>	ug/m3	13	87.5%	39	Aug-16	30	1	88	Aug-16 03:00	-	-

SAAQS: Saskatchewan Ambient Air Quality Standards



# WYAMZ Maidstone Station - August 2014 Summary Report



Parameters	Unit	Color Code for Wind Spd & Pollutant Conc. Class						
Wind Speed	m/s	0.3 ≤ WS < 1.4	1.4 ≤ WS < 3.1	3.1 ≤ WS < 7.8	7.8 ≤ WS < 10.8	10.8 ≤ WS < 13.6	WS ≥ 13.6	
SO <sub>2</sub>	ppb	0 ≤ C < 1	1 ≤ C < 5	5 ≤ C < 10	10 ≤ C < 57	57 ≤ C < 172	C ≥ 172	
NO <sub>2</sub>	ppb	0 ≤ C < 5	5 ≤ C < 15	15 ≤ C < 30	30 ≤ C < 100	100 ≤ C < 212	C ≥ 212	
H <sub>2</sub> S	ppb	0 ≤ C < 1	1 ≤ C < 3.6	3.6 ≤ C < 5	5 ≤ C < 8	8 ≤ C < 10.8	C ≥ 10.8	
PM <sub>2.5</sub>	ug/m <sup>3</sup>	0 ≤ C < 2	2 ≤ C < 4	4 ≤ C < 10	10 ≤ C < 20	20 ≤ C < 30	C ≥ 30	

## Monthly Update

- \*All data has been slope, intercept, and baseline corrected. Data may change after validation process.
- \*All compliance parameters were within the Saskatchewan Ambient Air Quality Standards, with the exception of two 1-hour H<sub>2</sub>S exceedance events and one 24-hour PM<sub>2.5</sub> exceedance event. Please refer to exceedance summary tables for details.
- \*All compliance parameters are above 90% operational, with the exception of the PM<sub>2.5</sub> analyzer..
- \*Operational issues include: 93 hours of PM<sub>2.5</sub> data flagged as "analyzer failure" on August 24-27 when the pump shut off following a power disruption. The analyzer returned to normal operations once the pump was restarted.

## Exceedance Summary

1-hour Exceedance Information			Summary of Other Parameters During Exceedance									
Pollutant	Conc. ppb	Exceedance Time mmm-dd hh:mm	WS m/s	WD deg	AQI -	Rain mm	ET C	SO <sub>2</sub> ppb	NO <sub>2</sub> ppb	H <sub>2</sub> S ppb	PM <sub>2.5</sub> ug/m <sup>3</sup>	
H2S	13.5	Aug-29 07:00	0.4	187	5	0.0	3.8	0	5	13.5	6	
H2S	11.7	Aug-29 08:00	0.8	138	4	0.0	5.4	0	5	11.7	5	
24-hour Exceedance Information			WS	WD	AQI	Rain	ET	SO <sub>2</sub>	NO <sub>2</sub>	H <sub>2</sub> S	PM <sub>2.5</sub>	
PM2.5	39	Aug-16	1.2	152	29	0.0	18.2	1	3	2.0	39	